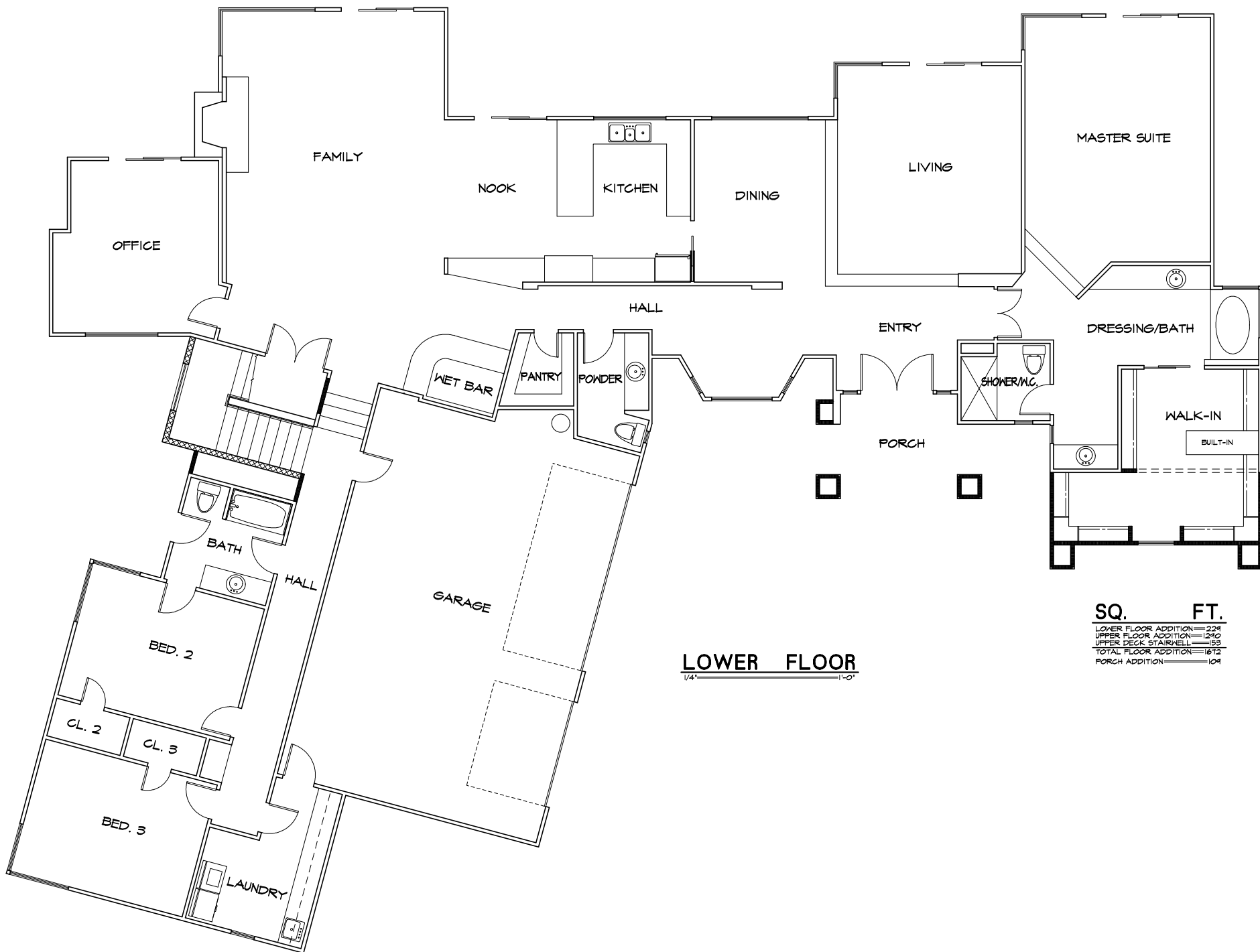




**FRONT** 1/4"=1'-0"



**BACK** 1/4"=1'-0"



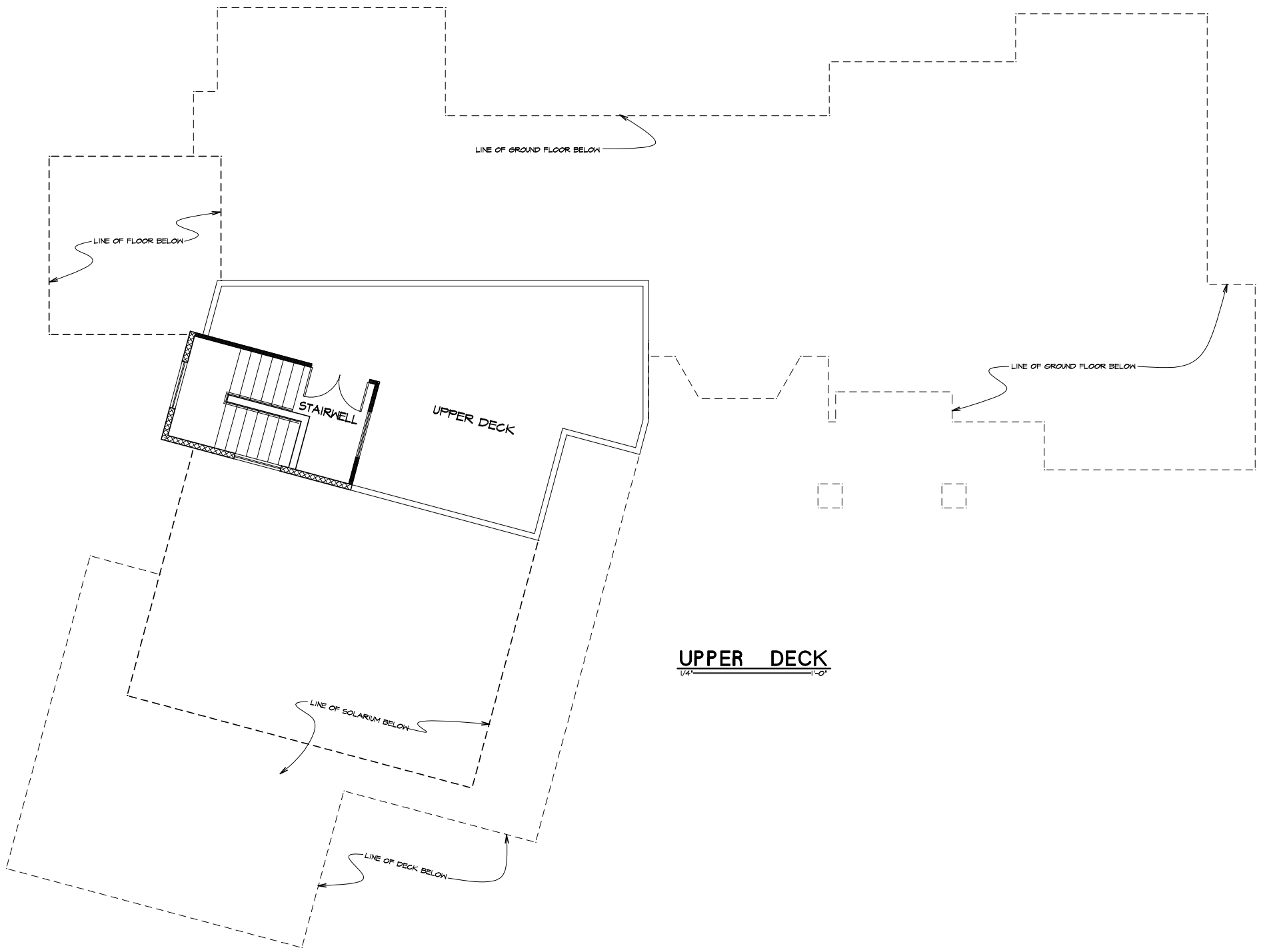
**LOWER FLOOR**

SQ.	FT.
LOWER FLOOR ADDITION	224
UPPER FLOOR ADDITION	1240
UPPER DECK STAIRWELL	155
TOTAL FLOOR ADDITION	1612
PORCH ADDITION	104



**UPPER FLOOR**

1/4" = 1'-0"



**UPPER DECK**

1/4" = 1'-0"